



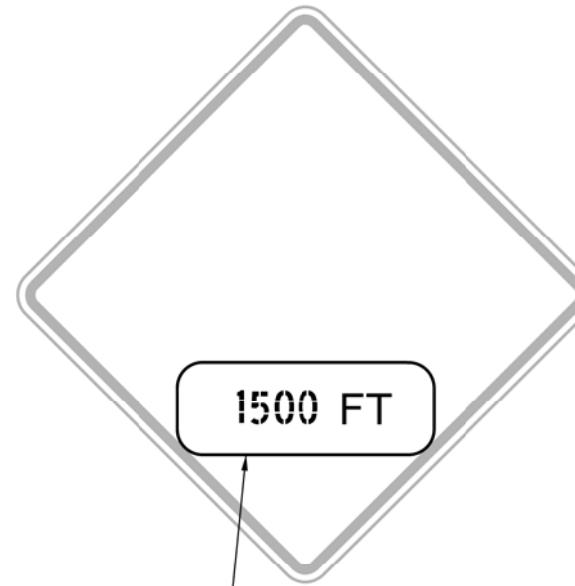
XW20-1  
XW20-1-A (10)



XW20-2 (10)



XW20-3 (10)



W16-2 (3)



XW20-4 (10)



XW21-3-A (10)  
(9)



XW21-4-A (10)

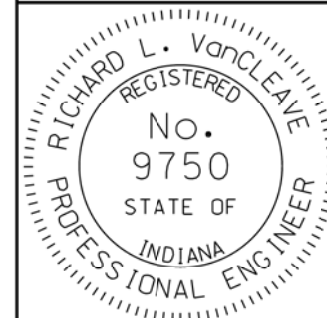
**NOTES:**

1. Sign XW21-3-A shall be placed as directed where road machinery is operating on or across pavement open to traffic.
2. See Standard Drawing E 801-TCSN-11 for additional general notes.
3. A 28 in. x 10 in. metal plate, covered with federal orange reflective material with black numerals designating predetermined distance, may be attached over the word "AHEAD" to more specifically locate the subject hazard.

INDIANA DEPARTMENT OF TRANSPORTATION

TRAFFIC CONTROL SIGNS  
SEPTEMBER 2010

STANDARD DRAWING NO. E 801-TCSN-01



<i>/s/ Richard L. VanCleave</i>	09/01/10
DESIGN STANDARDS ENGINEER	DATE
<i>/s/ Mark A. Miller</i>	09/01/10
CHIEF HIGHWAY ENGINEER	DATE

DESIGN STANDARDS ENGINEER

**GENERAL NOTES**

1. See Standard Drawing E 801-TCSN-11 for additional general notes.



XW21-6-A (9)



XW21-2  
XW21-2-A (9)  
(1)



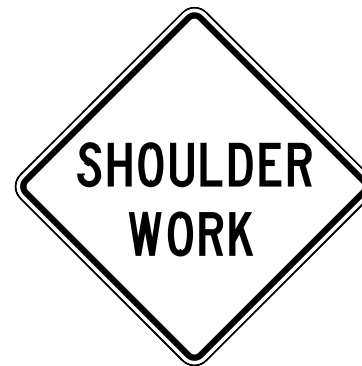
XW20-7 (9)  
(10)



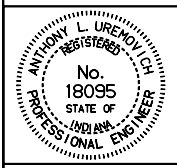
XW21-1 (9)



XW20-5 (R,L, or C) (10)

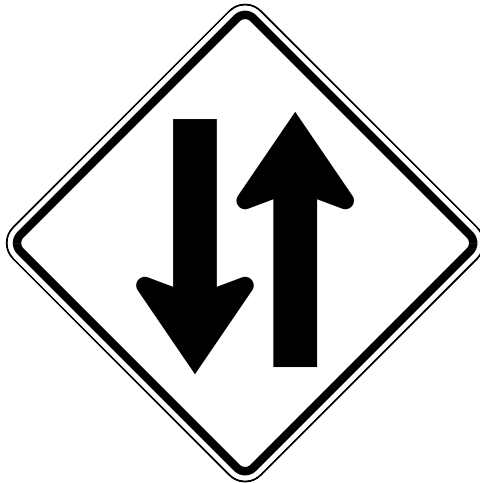


XW21-5-A

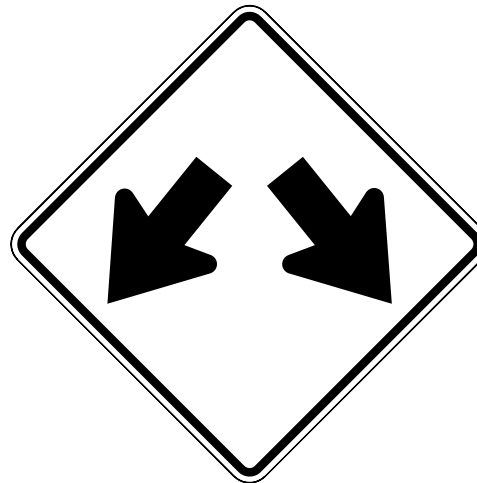
INDIANA DEPARTMENT OF TRANSPORTATION	
TRAFFIC CONTROL	
SIGNS	
SEPTEMBER 1997	
STANDARD DRAWING NO. E 801-TCSN-02	
	DETAILS PLACED IN THIS FORMAT 11-15-99
/s/ Anthony L. Uremovich DESIGN STANDARDS ENGINEER	11-15-99 DATE
/s/ Firooz Zandi CHIEF HIGHWAY ENGINEER	11-15-99 DATE
DESIGN STANDARDS ENGINEER	ORIGINALLY APPROVED 9-02-97

**GENERAL NOTES**

1. See Standard Drawing E 801-TCSN-11 for additional general notes.



XW6-3-B



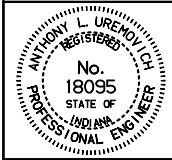
XW12-1-C

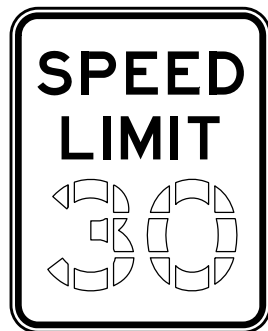


XM4-9 (R or L)  
XM4-9-B (R or L)



XM4-10 (R or L)

INDIANA DEPARTMENT OF TRANSPORTATION	
TRAFFIC CONTROL	
SIGNS	
JUNE 1995	
STANDARD DRAWING NO. E 801-TCSN-03	
	DETAILS PLACED IN THIS FORMAT 11-15-99
/s/ Anthony L. Uremovich 11-15-99 DESIGN STANDARDS ENGINEER DATE	
/s/ Firooz Zandi 11-15-99 CHIEF HIGHWAY ENGINEER DATE	
DESIGN STANDARDS ENGINEER	ORIGINALLY APPROVED 7-03-95



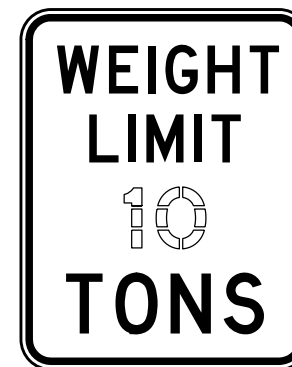
R2-1  
R2-1-B ①



R3-2a  
R3-2c ①



R11-2



R12-1  
R12-1-A ①



R6-1 (R or L)



R6-2-A (R or L)



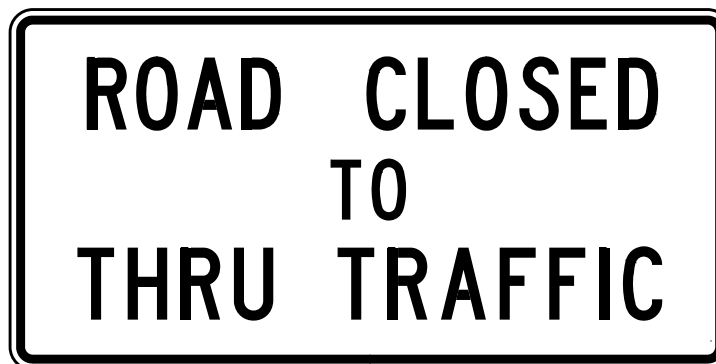
R11-3



R5-1-A  
R5-1-B ①



R4-1  
R4-1-B ①



R11-4

**NOTES:**

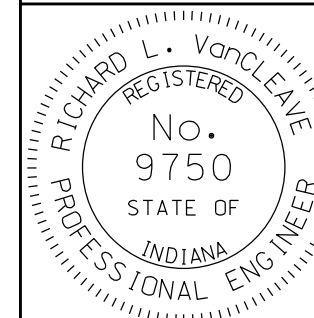
1. Signs R11-2, R11-3, R11-4, R5-1-A and R5-1-B shall be prismatic reflective sheeting background.
2. See Standard Drawing E 801-TCSN-11 for additional general notes.

INDIANA DEPARTMENT OF TRANSPORTATION

TRAFFIC CONTROL  
SIGNS

SEPTEMBER 2010

STANDARD DRAWING NO. E 801-TCSN-04



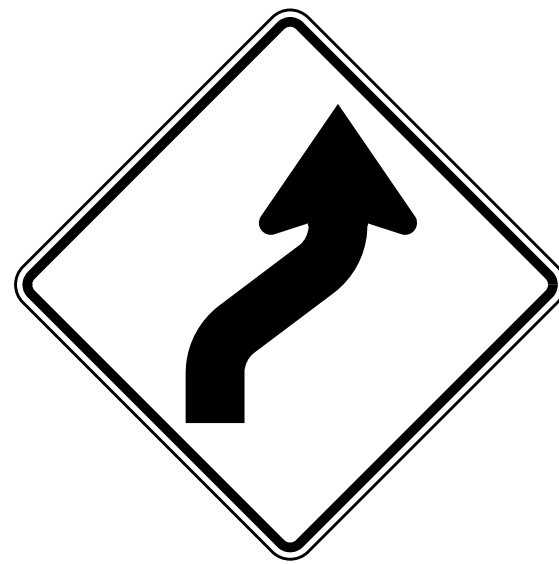
DESIGN STANDARDS ENGINEER

*/s/ Richard L. VanCleave* 09/01/10  
DESIGN STANDARDS ENGINEER DATE

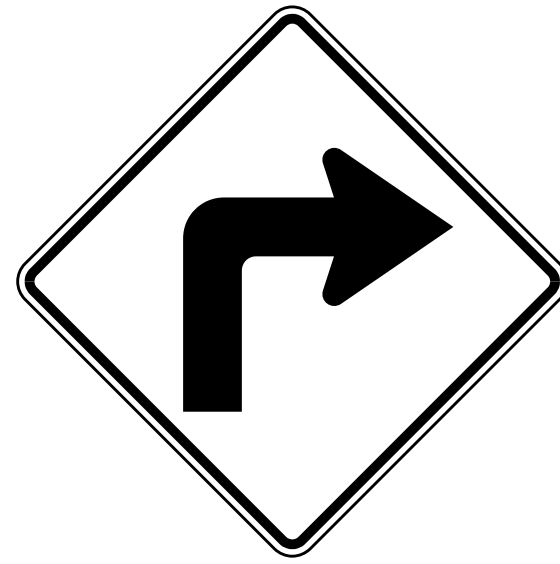
*/s/ Mark A. Miller* 09/01/10  
CHIEF HIGHWAY ENGINEER DATE

**NOTE:**

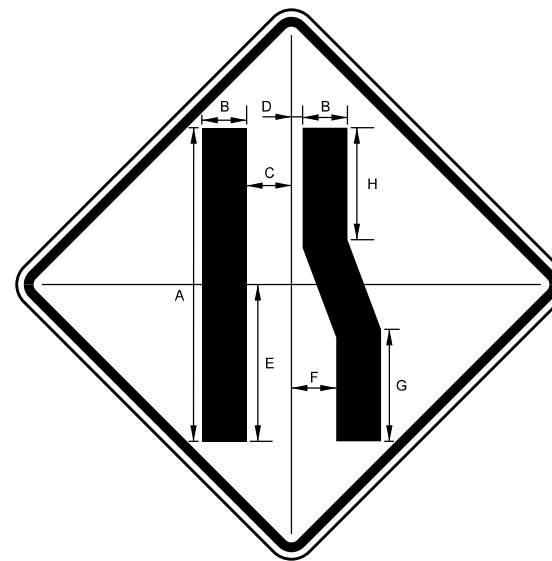
① See Standard Drawing E 801-TCSN-11 for additional general notes.



XW1-4-A (R or L)  
XW1-4-B (R or L) ①

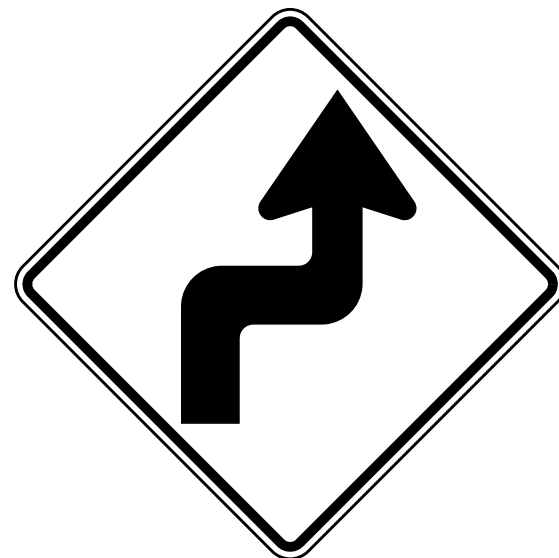


XW1-1-A (R or L)  
XW1-1-B (R or L) ①

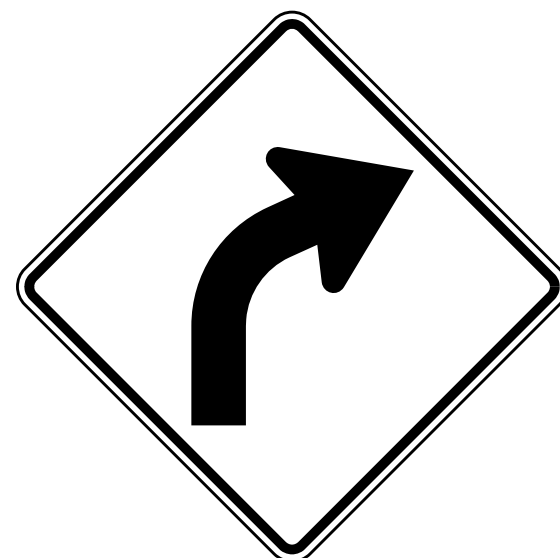


XW4-2 (R or L)  
XW4-2-A (R or L) ①

LANE ENDS		
	XW4-2	XW4-2-A
A	28	37
B	4	5 5/16
C	4	5 1/16
D	1	1 3/8
E	14	16 5/8
F	4	5 5/16
G	10	13 5/16
H	10	13 5/16



XW1-3-A (R or L)  
XW1-3-B (R or L) ①



XW1-2-A (R or L)  
XW1-2-B (R or L) ①

INDIANA DEPARTMENT OF TRANSPORTATION		
TRAFFIC CONTROL SIGNS		
SEPTEMBER 2010		
STANDARD DRAWING NO.		E 801-TCSN-05
	/s/ <i>Richard L. VanCleave</i>	09/01/10
	DESIGN STANDARDS ENGINEER	DATE
	/s/ <i>Mark A. Miller</i>	09/01/10
DESIGN STANDARDS ENGINEER	CHIEF HIGHWAY ENGINEER	DATE

**NOTE:**

① See Standard Drawing E 801-TCSN-11 for additional general notes.



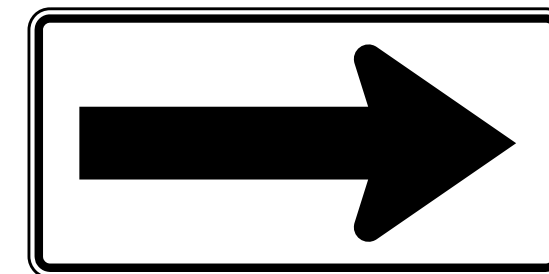
XW3-5



XW3-5a



XW13-1-A  
(To be used below a warning sign only.)



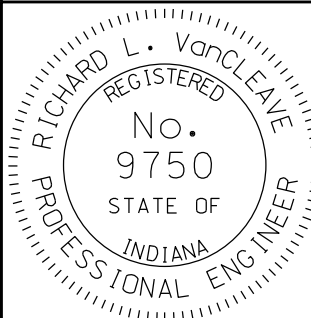
XW1-6  
XW1-6-A ①



XW6-2a-A  
XW6-2a-B ①



XW8-3-A

INDIANA DEPARTMENT OF TRANSPORTATION	
TRAFFIC CONTROL SIGNS	
SEPTEMBER 2011	
STANDARD DRAWING NO.	E 801-TCSN-06
	/s/ <i>Richard L. VanCleave</i> 09/01/11
	DESIGN STANDARDS ENGINEER DATE
	/s/ <i>Mark A. Miller</i> 09/01/11
	CHIEF HIGHWAY ENGINEER DATE
DESIGN STANDARDS ENGINEER	



XW8-2-A  
XW8-2-B (1)



XW8-6-A  
XW8-6-B (1)



XW8-1-A  
XW8-1-B (1)



XW8-4-A  
XW8-4-B (1)



XW9-2-A (R or L)

GENERAL NOTES

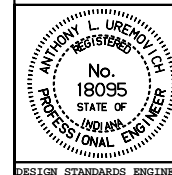
1. See Standard Drawing E 801-TCSN-11 for additional general notes.

INDIANA DEPARTMENT OF TRANSPORTATION

TRAFFIC CONTROL  
SIGNS

JUNE 1995

STANDARD DRAWING NO. E 801-TCSN-07



DETAILS PLACED IN THIS FORMAT 11-15-99

/s/ Anthony L. Uremovich 11-15-99  
DESIGN STANDARDS ENGINEER DATE

/s/ Firooz Zandi 11-15-99  
CHIEF HIGHWAY ENGINEER DATE

DESIGN STANDARDS ENGINEER

ORIGINALLY APPROVED 7-03-95

**GENERAL NOTES**

1. See Standard Drawing E 801-TCSN-11 for additional general notes.



XW105-1-A



XW109-1



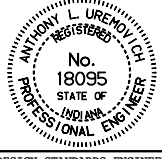
XW20-1a



XW106-2-A



XW106-1-A

INDIANA DEPARTMENT OF TRANSPORTATION	
TRAFFIC CONTROL	
SIGNS	
JUNE 1995	
STANDARD DRAWING NO. E 801-TCSN-08	
DETAILS PLACED IN THIS FORMAT 11-15-99	
	/s/ Anthony L. Uremovich 11-15-99 DESIGN STANDARDS ENGINEER DATE
	/s/ Firooz Zandi 11-15-99 CHIEF HIGHWAY ENGINEER DATE
DESIGN STANDARDS ENGINEER	ORIGINALLY APPROVED 7-03-95



**NOTE:**

① See Standard Drawing E 801-TCSN-11 for additional general notes.




XW9-1-A (R or L)  
XW9-1-B (R or L) ①



XW103-1



XW104-1  
To be used below an  
XW103-1 Sign only.

INDIANA DEPARTMENT OF TRANSPORTATION	
TRAFFIC CONTROL SIGNS	
SEPTEMBER 2010	
STANDARD DRAWING NO. E 801-TCSN-09	
	<i>/s/ Richard L. VanCleave</i> 09/01/10
	DESIGN STANDARDS ENGINEER DATE
	<i>/s/ Mark A. Miller</i> 09/01/10
DESIGN STANDARDS ENGINEER	CHIEF HIGHWAY ENGINEER DATE



XW101-1  
XW101-1-A

9 10  
1



XW102-1  
XW102-1-A

9  
1



XW108-1  
XW108-1-A

10  
1

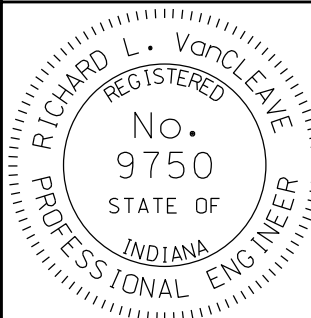
**GENERAL NOTES**

1. See Standard Drawing E 801-TCSN-11 for additional general notes.

INDIANA DEPARTMENT OF TRANSPORTATION	
<b>TRAFFIC CONTROL SIGNS</b>	
JUNE 1995	
STANDARD DRAWING NO. E 801-TCSN-10	
DETAILS PLACED IN THIS FORMAT 11-15-99	
	/s/ Anthony L. Uremovich 11-15-99 DESIGN STANDARDS ENGINEER DATE
	/s/ Firooz Zandi 11-15-99 CHIEF HIGHWAY ENGINEER DATE
	ORIGINALLY APPROVED 7-03-95

GENERAL NOTES:

- ① This sign shall be used on expressways, freeways, and other roadways with design speeds of 50 mph. or more.
2. The minimum vertical and horizontal clearances for construction signs shall be as on Standard Drawing E 801-TCDV-05.
3. The minimum horizontal clearance for construction signs on curbed roadway sections shall be 2'-0" from the face of the curb to the near edge of the sign.
4. The minimum depth for wood or steel posts shall be 4 ft.
5. See Standard Drawing E 801-TCDV-08 for U-Channel Steel Post Splice Detail.
- ⑨ This sign shall be removed, covered, or turned to face away from the roadway during non-working hours.
- ⑩ This sign may be ordered to read "500 FT", "1000 FT", or "1500 FT" in place of the word "Ahead". Such signs may be used in place of, or in conjunction with, the indicated sign.

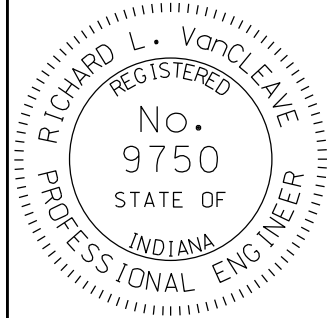
INDIANA DEPARTMENT OF TRANSPORTATION	
CONSTRUCTION SIGNS GENERAL NOTES SEPTEMBER 2010	
STANDARD DRAWING NO. E 801-TCSN-11	
	<i>/s/ Richard L. VanCleave</i> 09/01/10 DESIGN STANDARDS ENGINEER DATE
	<i>/s/ Mark A. Miller</i> 09/01/10 CHIEF HIGHWAY ENGINEER DATE
DESIGN STANDARDS ENGINEER	

SIGN NUMBER	SIGN MESSAGE	POST DESIGN		SIGN SIZE	SIGN COLOR		BORDER WIDTH	MARGIN WIDTH	LETTER HEIGHT SERIES-LINE 1	LETTER HEIGHT SERIES-LINE 2	LETTER HEIGHT SERIES-LINE 3	WORD OR LINE ①	PCT. ①	ARROW SIZE		CORNER RADIUS	NUMBER OF POSTS	
		4 x 4 WOOD	STEEL		BACKGROUND	COPY								HEAD	SHAFT		ONE	TWO
XG20-1	"Road Construction Next ____ Miles"	*	B	60 x 36	Orange	Black	3/4	1/2	6 - Series C	6 - Series C	6 - Series C					2 1/4		X
XG20-2	"End Construction"	*	B	60 x 24	Orange	Black	1/2	3/8	6 - Series C	6 - Series C						1 1/2		X
XG20-2a	"End Road Work"	*	B	48 x 18	Orange	Black	1/2	3/8	6 - Series C	6 - Series C						1 1/2		X
XG20-4	"Pilot Car Follow Me"	--	--	36 x 18	Orange	Black	1/2	3/8	5 - Series C	5 - Series C						1 1/2		
XG20-5	(Route number or) "Lane Closed" __ (date)	*	B	48 x 36	Orange	Black	3/4	1/2	6 - Series C	6 - Series C	6 - Series C					2 1/4		X
XG20-5-B	"Worksite" plate	--	--	48 x 16	Orange	Black	1/2	3/8	8 - Series C							1 1/2	----	----
XW20-6	"Lane Restrictions On Or After *** ** 2007	*	B	60 x 30	Orange	Black	3/4	1/2	5 - Series C	5 - Series C	4 - Series C					1 7/8		X
XW20-6a	"Lane Restrictions On Or After *** ** 2007	*	B	72 x 36	Orange	Black	7/8	5/8	6 - Series C	6 - Series C	5 - Series C					2 1/4		X
XM4-9 (R or L)	"Detour" (above black arrow)	*	A	30 x 24	Orange	Black	1/2	3/8	5 - Series D			"Detour"		7 x 8	11 x 3 1/2	1 1/2		X
XM4-9-B (R or L)	"Detour" (above black arrow)	*	B	60 x 48	Orange	Black	1 1/4	3/8	10 - Series D			"Detour"		14 3/4 x 16	21 3/4 x 7	3		X
XM4-10 (R or L)	"Detour" (inside orange arrow)	*	B	48 x 18	Black & Orange	Black	----	3/8	6 - Series D					12 x 13 3/8	29 3/4 x 8	1 1/2		X
XW1-1-A (R or L)	(Turn symbol)	*	A	36 x 36	Orange	Black	3/4	1/2						10 5/8 x 12	5 1/4	2 1/4		X
XW1-1-B (R or L)	(Turn symbol)	*	B	48 x 48	Orange	Black	1 1/4	3/4						14 1/8 x 16	7	3		X
XW1-2-A (R or L)	(Curve symbol)	*	A	36 x 36	Orange	Black	3/4	1/2						10 5/8 x 12	5 1/4	2 1/4		X
XW1-2-B (R or L)	(Curve symbol)	*	B	48 x 48	Orange	Black	1 1/4	3/4						14 1/8 x 16	7	3		X
XW1-3-A (R or L)	(Reverse turn symbol)	*	A	36 x 36	Orange	Black	3/4	1/2						10 5/8 x 12	5 1/4	2 1/4		X
XW1-3-B (R or L)	(Reverse turn symbol)	*	B	48 x 48	Orange	Black	1 1/4	3/4						14 1/8 x 16	7	3		X
XW1-4-A (R or L)	(Reverse curve symbol)	*	A	36 x 36	Orange	Black	3/4	1/2						10 5/8 x 12	5 1/4	2 1/4		X
XW1-4-B (R or L)	(Reverse curve symbol)	*	B	48 x 48	Orange	Black	1 1/4	3/4						14 1/8 x 16	7	3		X
XW1-6	(Single headed arrow)	*	B	48 x 24	Orange	Black	3/4	3/4						13 1/8 x 15	26 x 6 1/2	1 1/2		X
XW1-6-A	(Single headed arrow)	*	B	60 x 30	Orange	Black	3/4	1/2						16 3/8 x 18	32 1/2 x 8	2 1/4		X
XW4-2 (R or L)	(Lane ends merge ____ symbol)	*	A	36 x 36	Orange	Black	3/4	1/2	See Standard Sheet 3A Detours							2 1/4		X
XW4-2-A (R or L)	(Lane ends merge ____ symbol)	*	B	48 x 48	Orange	Black	1 1/4	3/4	See Standard Sheet 3A Detours							1 1/2		X
XW6-2a-A	(Divided highway ends symbol)	*	A	36 x 36	Orange	Black	3/4	1/2	5 - Series D	5 - Series D	5 - Series D					2 1/4		X
XW6-2a-B	(Divided highway ends symbol)	*	B	48 x 48	Orange	Black	1 1/4	3/4	7 - Series D	7 - Series D	7 - Series D					3		X
XW3-5-A	Arrow - "Speed Limit ____"	*	A	36 x 36	Orange	Black	7/8	5/8	3 - Series E	3 - Series E	12 - C					2 1/4		X
XW3-5-B	Arrow - "Speed Limit ____"	*	B	48 x 48	Orange	Black	1 1/4	3/4	4 - Series E	4 - Series E	15 C					3		X
XW3-5a-A	" ____ - MPH - Speed Zone Ahead"	*	A	36 x 36	Orange	Black	7/8	5/8	5 - Series C	5 - Series C	5 - Series C					2 1/2		X
XW3-5a-B	" ____ - MPH - Speed Zone Ahead"	*	B	48 x 48	Orange	Black	1 1/4	3/4	7 - Series C	7 - Series C	7 - Series C					3		X

\*Wood post permitted.

**NOTES:**

- ① Spacing between letters of this word or line shall be reduced by this percentage as shown in the FHWA document, Standard Highway Signs.
2. See Standard Drawing E 801-TCSN-11 for additional general notes.
3. All dimensions are in inches.

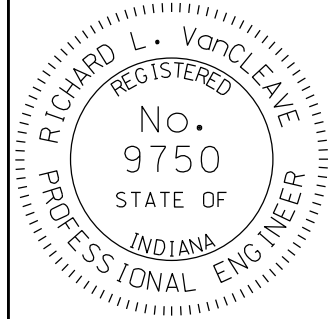
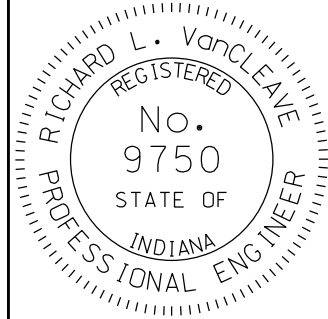
INDIANA DEPARTMENT OF TRANSPORTATION	
SIGN DESIGN DETAILS (Sheet 1 of 2)	
SEPTEMBER 2011	
STANDARD DRAWING NO.	E 801-TCSN-12
	<i>/s/ Richard L. VanCleave</i> 09/01/11 DESIGN STANDARDS ENGINEER      DATE
DESIGN STANDARDS ENGINEER	<i>/s/ Mark A. Miller</i> 09/01/11 CHIEF HIGHWAY ENGINEER      DATE

SIGN NUMBER	SIGN MESSAGE	POST DESIGN		SIGN SIZE	SIGN COLOR		BORDER WIDTH	MARGIN WIDTH	LETTER HEIGHT SERIES-LINE 1	LETTER HEIGHT SERIES-LINE 2	LETTER HEIGHT SERIES-LINE 3	WORD OR LINE ①	PCT. ①	ARROW SIZE		CORNER RADIUS	NUMBER OF POSTS	
		4 x 4 WOOD	STEEL		BACKGROUND	COPY								HEAD	SHAFT		ONE	TWO
XW6-3-B	(Two way traffic symbol)	*	B	48 x 48	Orange	Black	1 1/4	3/4						11 5/8 x 13 3/4	23 1/2 x 6	3		X
XW8-1-A	"Bump"	*	A	36 x 36	Orange	Black	3/4	1/2	10 - Series D							2 1/4		X
XW8-1-B	"Bump"	*	B	48 x 48	Orange	Black	1 1/4	3/4	12 - Series D							3		X
XW8-2-A	"Dip"	*	A	36 x 36	Orange	Black	3/4	1/2	10 - Series E							2 1/4		X
XW8-2-B	"Dip"	*	B	48 x 48	Orange	Black	1 1/4	3/4	12 - Series E							3		X
XW8-3-A	"Pavement Ends"	*	A	36 x 36	Orange	Black	3/4	1/2	6 - Series C	6 - Series C						2 1/4		X
XW8-4-A	"Soft Shoulder"	*	A	36 x 36	Orange	Black	3/4	1/2	6 - Series C	6 - Series C						2 1/4		X
XW8-4-B	"Soft Shoulder"	*	B	48 x 48	Orange	Black	1 1/4	3/4	8 - Series C	8 - Series C						3		X
XW8-6-A	"Truck Crossing"	*	A	36 x 36	Orange	Black	3/4	1/2	6 - Series C	6 - Series C						2 1/4		X
XW8-6-B	"Truck Crossing"	*	B	48 x 48	Orange	Black	1 1/4	3/4	8 - Series C	8 - Series C						3		X
XW9-1-A (R or L)	" ___ Lane Ends"	*	A	36 x 36	Orange	Black	3/4	1/2	6 - Series D	6 - Series D	6 - Series D					2 1/4		X
XW9-1-B (R or L)	" ___ Lane Ends"	*	B	48 x 48	Orange	Black	1 1/4	3/4	8 - Series D	8 - Series D	8 - Series D					3		X
XW9-2-A (R or L)	"Lane Ends Merge ___"	*	B	48 x 48	Orange	Black	1 1/4	3/4	6 - Series C	8 - Series D	8 - Series D					2 1/4		X
XW12-1-C	(Double headed arrow)	*	B	48 x 48	Orange	Black	1 1/4	3/4						12 1/2 x 15	12 x 5 1/4	3		X
XW13-1-A	" ___ MPH" (Advisory speed plate)	*	A	24 x 24	Orange	Black	1/2	3/8	10 - Series E	4 - Series E						1 1/2	----	----
XW20-1	"Road Construction Ahead"	*	B	48 x 48	Orange	Black	1 1/4	3/4	7 - Series C	7 - Series C	7 - Series C	"Construction"	25			3		X
XW20-1-A	"Road Construction Ahead"	*	B	60 x 60	Orange	Black	1 1/2	1	8 - Series C	8 - Series C	8 - Series C	"Construction"	25			95		X
XW20-1a	"Road Repairs Next ___ Miles"	*	B	48 x 48	Orange	Black	1 1/4	3/4	8 - Series C	8 - Series C	6 - Series C					3		X
XW20-2	"Detour Ahead"	*	B	48 x 48	Orange	Black	1 1/4	3/4	8 - Series D	8 - Series D		"Detour"	25			3		X
XW20-3	"Road Closed Ahead"	*	B	48 x 48	Orange	Black	1 1/4	3/4	7 - Series D	7 - Series D	7 - Series D					3		X
XW20-4	"One Lane Road Ahead"	*	B	48 x 48	Orange	Black	1 1/4	3/4	7 - Series C	7 - Series C	7 - Series C					3		X
XW20-5 (R, C, or L)	" ___ Lane Closed Ahead"	*	B	48 x 48	Orange	Black	1 1/4	3/4	6 - Series C	6 - Series C	6 - Series C		2			3		X
XW20-7a-A	(Flagger symbol)	*	B	48 x 48	Orange	Black	1 1/4	3/4								1 1/2		X
XW21-1a	(Workers symbol)	*	A	36 x 36	Orange	Black	3/4	1/2	6 - Series D							2 1/4		X
XW21-2	"Fresh Oil"	*	A	30 x 30	Orange	Black	3/4	3/8	6 - Series D	6 - Series D		"Fresh"	2/4			1 7/8	X	
XW21-2-A	"Fresh Oil"	*	A	36 x 36	Orange	Black	3/4	1/2	7 - Series D	7 - Series D		"Fresh"	3/4			2 1/4		X
XW21-3-A	"Road Machinery Ahead"	*	B	48 x 48	Orange	Black	1 1/4	3/4	7 - Series D	7 - Series D	7 - Series D	"Machinery"	25			3		X
XW21-4-A	"Road Work Ahead"	*	B	48 x 48	Orange	Black	1 1/4	3/4	7 - Series D	7 - Series D	7 - Series D					3		X
XW21-5-A	"Shoulder Work"	*	A	36 x 36	Orange	Black	3/4	1/2	6 - Series C	6 - Series C		"Shoulder"	1			2 1/4		X
XW21-6-A	"Survey Crew"	*	A	36 x 36	Orange	Black	3/4	1/2	6 - Series C	6 - Series C						2 1/4		X

\*Wood post permitted.

**NOTES:**

- ① Spacing between letters of this word or line shall be reduced by this percentage as shown in the FHWA document, Standard Highway Signs.
2. See Standard Drawing E 801-TCSN-11 for additional general notes.
3. All dimensions are in inches.


<b>INDIANA DEPARTMENT OF TRANSPORTATION</b>	
<b>SIGN DESIGN DETAILS</b> (sheet 2 of 2)	
<b>SEPTEMBER 2011</b>	
<b>STANDARD DRAWING NO.</b>	<b>E 801-TCSN-12A</b>
	<i>/s/ Richard L. VanCleave</i> 09/01/11 DESIGN STANDARDS ENGINEER      DATE
	<i>/s/ Mark A. Miller</i> 09/01/11 CHIEF HIGHWAY ENGINEER      DATE
<b>DESIGN STANDARDS ENGINEER</b>	

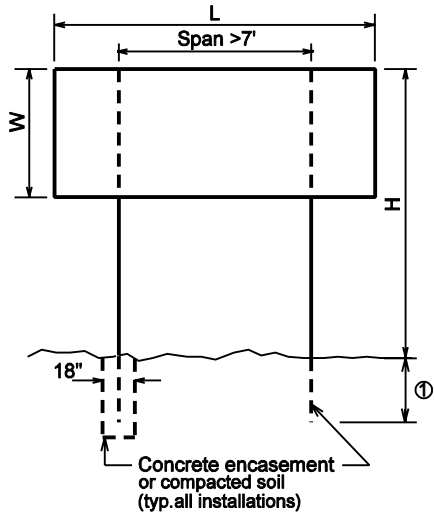
SIGN NUMBER	SIGN MESSAGE	POST DESIGN		SIGN SIZE	SIGN COLOR		BORDER WIDTH	MARGIN WIDTH	LETTER HEIGHT SERIES-LINE 1	LETTER HEIGHT SERIES-LINE 2	LETTER HEIGHT SERIES-LINE 3	LETTER HEIGHT SERIES-LINE 4	ARROW SIZE		CORNER RADIUS	NO. OF POSTS	
		4 x 4 WOOD	STEEL		BACKGROUND	COPY							HEAD	SHAFT		ONE	TWO
XW101-1	"Mowing Crews Ahead"	*	A	36 x 36	Orange	Black	3/4	1/2	6 - Series C	6 - Series C	6 - Series C				2 1/4		X
XW101-1-A	"Mowing Crews Ahead"	*	B	48 x 48	Orange	Black	1 1/4	3/4	8 - Series C	8 - Series C	8 - Series C				3		X
XW102-1	"Mowing Crews Next ____ Miles"	*	A	36 x 36	Orange	Black	3/4	1/2	6 - Series C	6 - Series C	4 - Series C	4 - Series C			2 1/4		X
XW102-1-A	"Mowing Crews Next ____ Miles"	*	B	48 x 48	Orange	Black	1 1/4	3/4	8 - Series C	8 - Series C	6 - Series C	6 - Series C			3		X
XW103-1	"Watch For Stopped Traffic"	*	B	48 x 48	Orange	Black	1 1/4	3/4	7 - Series C	7 - Series C	7 - Series C				3		X
XW104-1	"Overhead Sign Installation"	*	B	60 x 24	Orange	Black	1/2	3/8	6 - Series C	6 - Series C					1 1/2		X
XW105-1-A	"Right Lane Exit Open"	*	B	48 x 48	Orange	Black	1 1/4	3/4	6 - Series C	6 - Series C					3		X
XW106-1-A	"Exit Closed"	*	B	48 x 48	Orange	Black	1 1/4	3/4	7 - Series C	7 - Series C					3		X
XW106-2-A	"Exit Open"	*	B	48 x 48	Orange	Black	1 1/4	3/4	7 - Series C	7 - Series C					3		X
XW108-1	"Utility Work Ahead"	*	A	36 x 36	Orange	Black	3/4	1/2	6 - Series D	6 - Series D	6 - Series D				2 1/4		X
XW108-1-A	"Utility Work Ahead"	*	B	48 x 48	Orange	Black	1 1/4	3/4	6 - Series C	6 - Series C	6 - Series C				3		X
XW109-1	"Exit" (above black arrow)	*	B	48 x 48	Orange	Black	1 1/4	3/4	12 - Series D						3		X
R2-1	"Speed limit _____"	*	A	24 x 30	White	Black	1/2	3/8	4 - Series E	4 - Series E	10 - Series E				1 1/2	X	
R2-1-B	"Speed limit _____"	*	B	48 x 60	White	Black	1 1/4	3/4	8 - Series E	8 - Series E	16 - Series E				3		X
R3-2-A (R or L)	(No ____ turn symbol)	*	A	30 x 30	White	Black	3/4	3/8							2	X	
R3-2-C (R of L)	(No ____ turn symbol)	*	B	48 x 48	White	Black	1 1/4	3/4							3		X
R4-1	"Do Not Pass"	*	A	24 x 30	White	Black	1/2	3/8	6 - Series D	6 - Series D	5 - Series D				1 7/8	X	
R4-1-B	"Do Not Pass"	*	B	48 x 60	White	Black	1 1/4	3/4	10 - Series D	10 - Series D	10 - Series D				3		X
R5-1-A	"Do Not Enter" (inside symbol)	*	A	36 x 36	Red	White	Radius 17	1/2	5 - Series D	6 x 30 Bar	5 - Series D				2 1/4		X
R5-1-B	"Do Not Enter" (inside symbol)	*	B	48 x 48	Red	White	Radius 23	1/2	6 - Series D	8 x 40 Bar	6 - Series D				3		X
R6-1 (R or L)	"One Way" (inside white arrow)	*	A	36 x 36	Black & White	Black	----	3/8	4 - Series D				7 1/2 x 8 1/2	22 1/4 x 5 1/4	1 1/2		X
R6-2-A (R or L)	"One Way" (above black arrow)	*	A	24 x 30	White	Black	1/2	3/8	6 - Series D	6 - Series D			5 1/4 x 6	8 x 2 1/4	1 1/2	X	
R11-2	"Road Closed"	*	B	48 x 30	White	Black	3/4	3/8	8 - Series D	8 - Series D					1 7/8		X
R11-3	"Road Closed ____ Miles Ahead "Local Traffic Only"	*	B	60 x 30	White	Black	3/4	3/8	6 - Series C	5 - Series C	4 - Series C				1 7/8		X
R11-4	"Road Closed To Thru Traffic"	*	B	60 x 30	White	Black	3/4	3/8	6 - Series C	5 - Series C	6 - Series C				1 7/8		X
R12-1	"Weight Limit ____ Tons"	*	A	24 x 30	White	Black	1/2	3/8	4 - Series D	4 - Series D	5 - Series E	5 - Series D			1 1/2	X	
R12-1-A	"Weight Limit ____ Tons"	----	B	36 x 48	White	Black	3/4	1/2	6 - Series D	6 - Series D	8 - Series E	10 - Series D			2 1/4		X
S 4-4	"When Flashing" plaque	*	----	48 x 20	White	Black	1/2	3/8	5 - Series D	5 - Series D					1 1/2	----	----
R2-Y12	"End Work Site Speed Limit"	*	A	24 x 36	White	Black	1/2	3/8	4 - Series D	4 - Series D	4 - Series D	4 - Series D			1 1/2	X	
R2-Y12-B	"End Work Site Speed Limit"	*	B	36 x 54	White	Black	1 1/4	3/4	6 - Series D	6 - Series D	6 - Series D	6 - Series D			3		X

\* Wood post permitted.

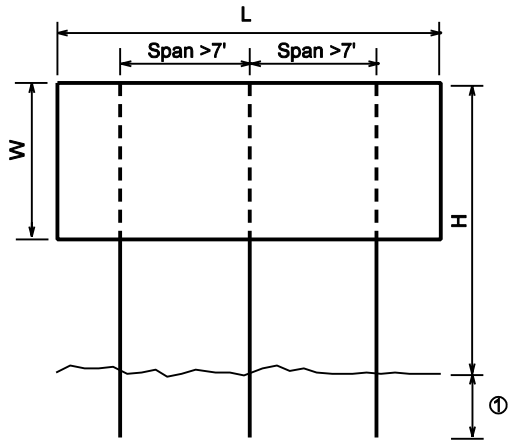
**NOTES:**

1. See Standard Drawing E 801-TCSN-11 for General Notes.
2. All dimensions are in inches.

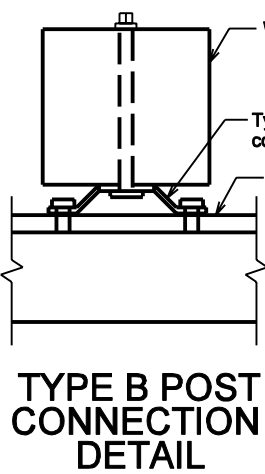
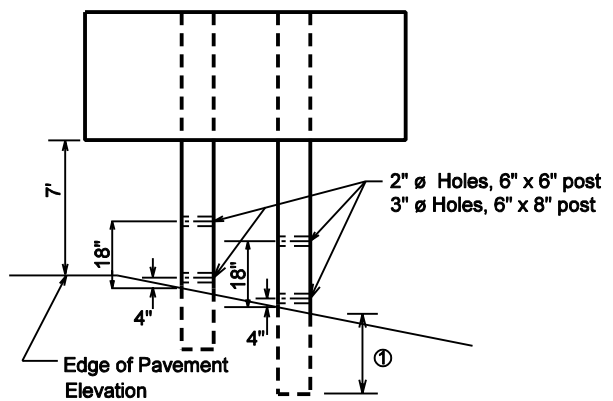
INDIANA DEPARTMENT OF TRANSPORTATION	
SIGN DESIGN DETAILS	
SEPTEMBER 2012	
STANDARD DRAWING NO.	E 801-TCSN-13
	<i>/s/ Richard L. VanCleave</i> 09/04/12 SUPERVISOR, ROADWAY STANDARDS      DATE
	<i>/s/ Mark A. Miller</i> 09/04/12 CHIEF ENGINEER      DATE



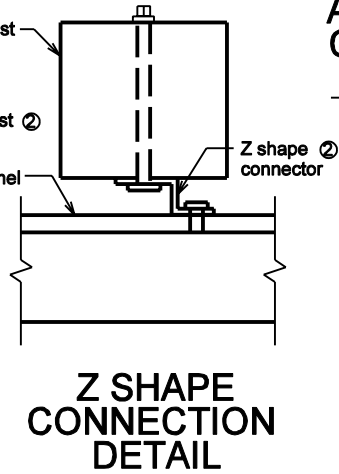
**2 - Post Installation**



**3 - Post Installation**



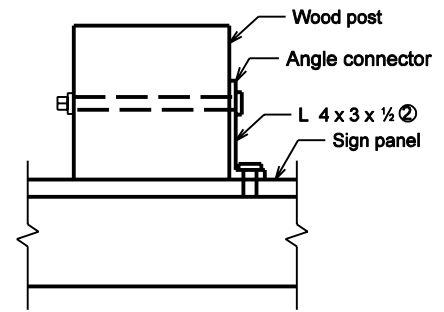
**TYPE B POST CONNECTION DETAIL**



**Z SHAPE CONNECTION DETAIL**

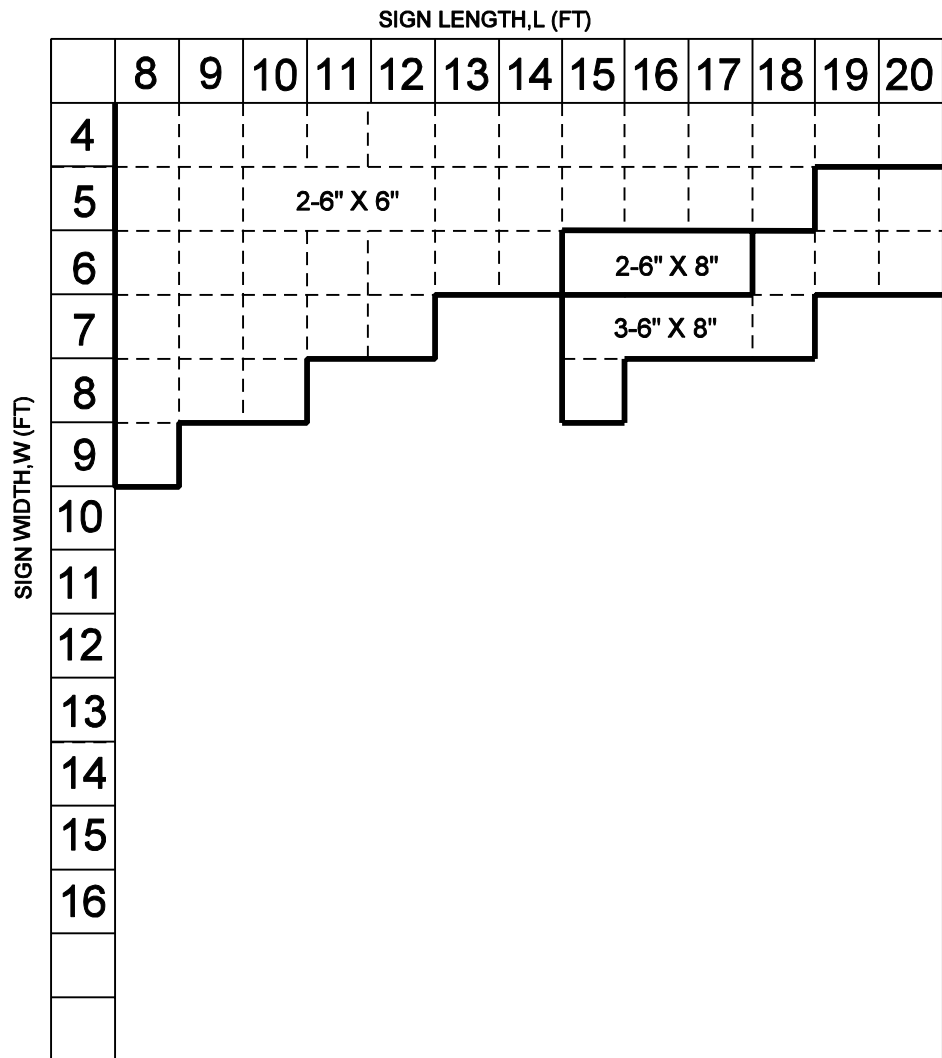
**NOTES**

- ① This dimension is  $H/10 + 3$  feet or a minimum of 5 feet.
- ② The length of each of these pieces equals W.
- 3. See standard drawing E 801-TCSN-15 for post size and number of posts required.



**ANGLE SHAPE CONNECTION DETAIL**

INDIANA DEPARTMENT OF TRANSPORTATION	
TEMPORARY PANEL SIGN BREAK-AWAY POST INSTALLATION	
MARCH 2002	
STANDARD DRAWING NO. E 801-TCSN-14	
	<i>/s/ Richard L. VanCleave</i> 3-01-02 DESIGN STANDARDS ENGINEER DATE
	<i>/s/ Richard K. Smutzer</i> 3-01-02 CHIEF HIGHWAY ENGINEER DATE
DESIGN STANDARDS ENGINEER	



**NOTES:**

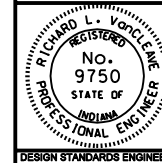
No more than one post can be located in a 7 foot wide path.

INDIANA DEPARTMENT OF TRANSPORTATION

**WOOD POST DESIGN FOR  
TEMPORARY PANEL SIGNS**

MARCH 2002

STANDARD DRAWING NO. E 801-TCSN-15



*/s/ Richard L. Vance* 3-01-02  
DESIGN STANDARDS ENGINEER DATE

*/s/ Richard K. Smutzer* 3-01-02  
CHIEF HIGHWAY ENGINEER DATE

DESIGN STANDARDS ENGINEER